

Danish Government Infostructurebase

WebDAV User guide

Upload and download documents within the Repository

Prepared by:
Simon T. Riemann

Index

Index.....	1
Before you start.....	1
What can you do with WebDAV?	1
Operating systems and programs supporting WebDAV.....	1
WebDAV using Windows 2000 and Internet Explorer	2
How to: Open a Web-folder.....	2
How to: Add a network place.....	3
WebDAV download.....	5
WebDAV Upload.....	6
Windows 98	7
Add a network place.....	7
Upload/download	8
Using XML Spy version 5.....	8
Linux using KDE (2.2 or higher)	10
Mac OS using Goliath	10

Before you start

What can you do with WebDAV?

With the **Repository** WebDAV you can copy files between your local machine and a machine on the network over HTTP. This means you can copy files to and from the **Repository** if you have access to the Internet - without using the **Repository** site functionality. The **Repository** WebDAV does not support versioning of files. Additionally the **Repository** WebDAV does not support deletion of *approved* standards.

When uploading a scheme to the **Repository**, two additional files with the additional extensions “meta.xml” and “system.xml” are auto generated. The file with the “meta.xml” extension contains meta tags like “Documenttag” “Description” and “Taxonomy”. The file may be opened and edited by you to suit your needs.

You may also upload a long metadata file. No metadata file is associated to this file. The name conventions is: <standard>.attach.<doc.ext>.

Here is an example: standardfilename.xsd.attach.attachedfilename.doc

Operating systems and programs supporting WebDAV

The **Repository** WebDAV access is supplied by Microsoft IIS 6.0. Thus clients supporting standard WebDAV functionality are supported. Some supported file managers include:

Microsoft Windows:

Microsoft Internet Explorer 5.0 or later.

MacOS 8.1 or higher:

Goliath

MacOS X:

OS X Finder

Goliath

Linux:

KDE 2.0 or later

Kiwi (Linux kernel 2.4 or higher)

Unix

Cadaver

A few platform independent clients exist. One is the *DAV Explorer* - a free-ware Java product supporting most common operating systems.

For an extensive listing of client side tools refer to <http://www.webdav.org/projects/>

This document describes how to use WebDAV in Microsoft Windows 2000/98 using Windows Internet Explorer, Macintosh using Goliath and Linux using KDE.

*Pre re-
quire-
ments*

In order to use WebDAV with the **Repository** you must pose a valid user name and password to the site. Depending on your rights you will have *limited read and/or limited write* rights.

WebDAV using Windows 2000 and Internet Explorer

Before you can up- or download files from the **Repository** you must either open a web-folder or add a network place.

How to: Open a Web-folder

Open an **Internet Explorer**. In the **File** menu select **Open**. Enter the Internet address of the **Repository**: <http://rep.oio.dk/> and select **Open as Web folder**.

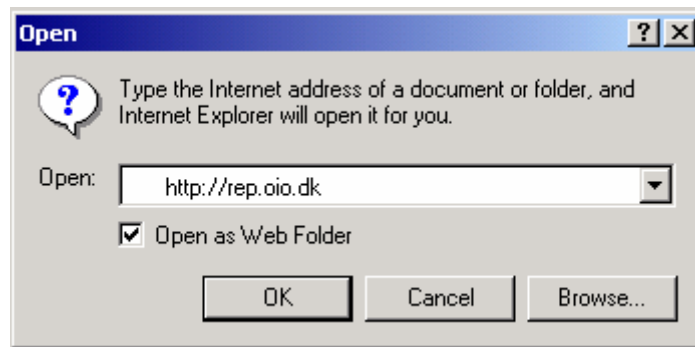


Figure 1 – Open as Web Folder

Select **OK**.

You will now see the top level folder of the **Repository**.

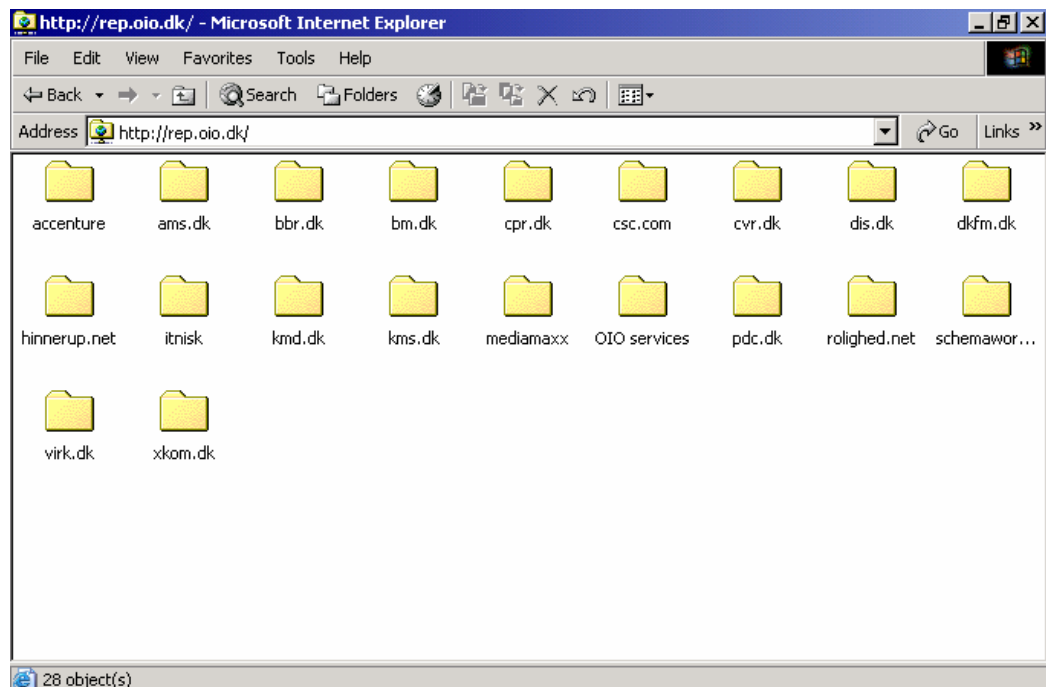


Figure 2 – Top level folder of the Repository

How to: Add a network place.

Before you can use WebDAV for the first time you must add a network place on your computer. First you open a **Windows Explorer** and select **My Network Places** (see Figure 3 and Figure 4).

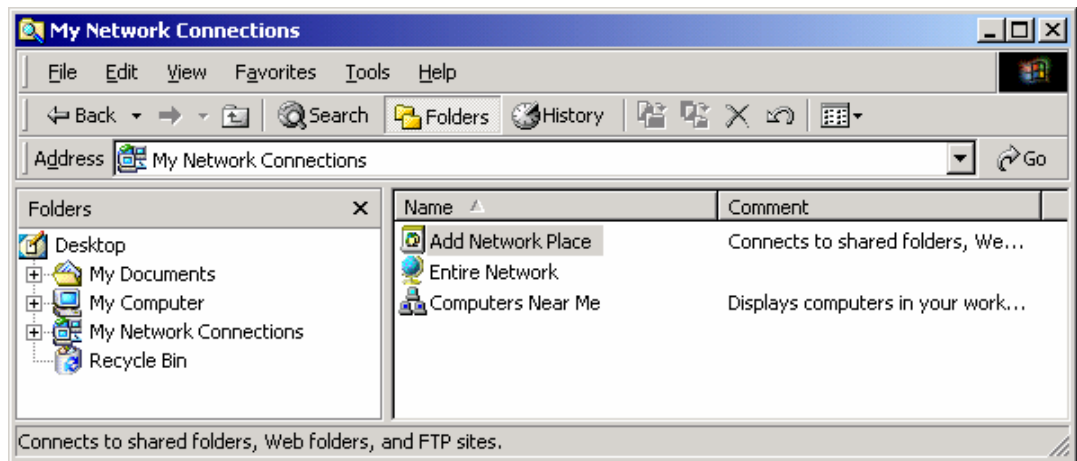


Figure 3 – My Network Connections

Double click **Add Network Place**.

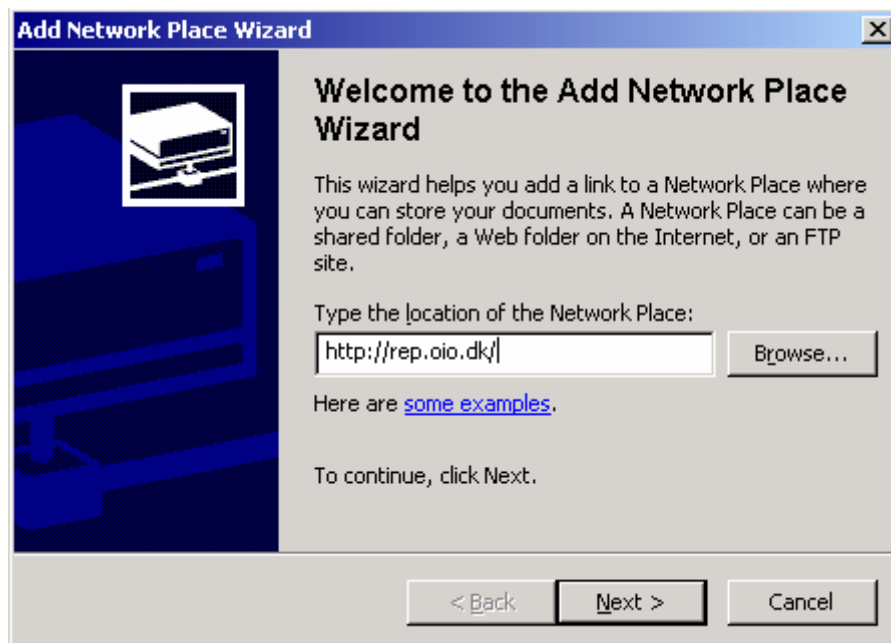


Figure 4 – Add Network Place Wizard

This starts the **Add Network Place Wizard**. Enter the location of the network place (**Repository**: rep.oio.dk), and click **Next**.

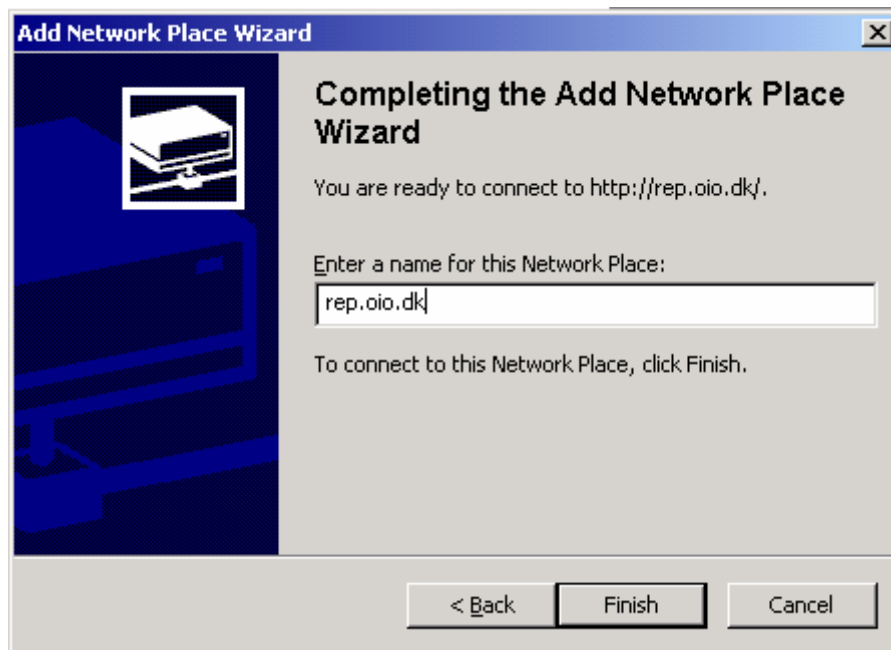


Figure 5 – Add Network Place Wizard

Enter a name for the network place.

Click **Finish** and the network place opens.

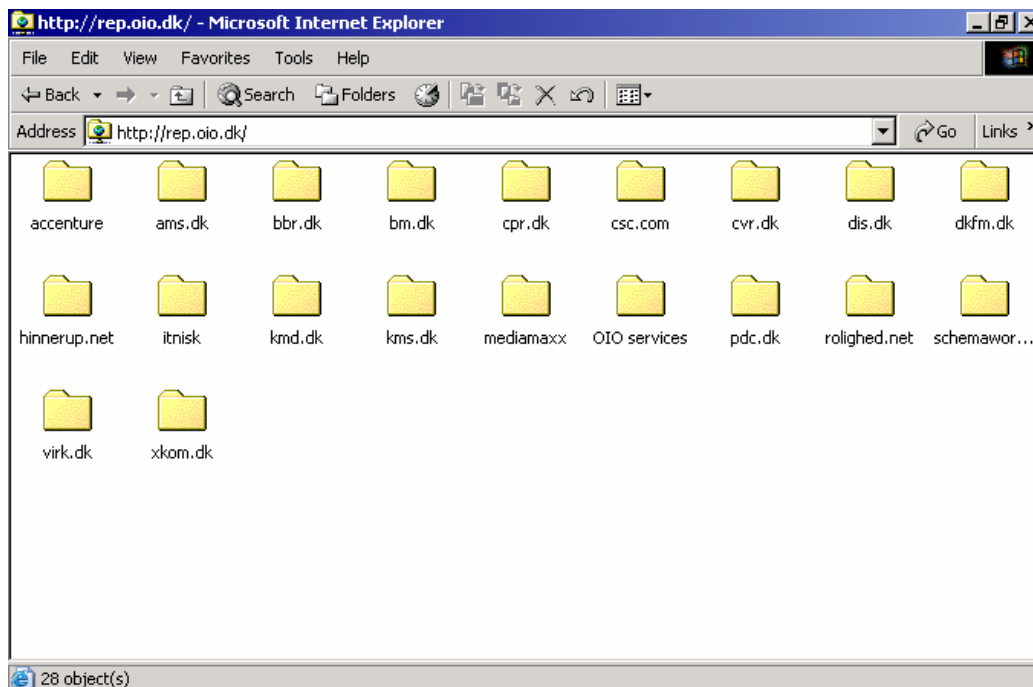


Figure 6 - WebDAV using a standard Windows Explorer.

The network place is now ready for WebDAV upload and download.

WebDAV download

Open your network place associated with the **Repository** WebDAV either by adding a network place or by opening a web folder (see previous sections).

Navigate through the directories and select the files to save (see Figure 7). In the **Edit** menu select **Copy To Folder**. Navigate to your destination folder and select **OK**.

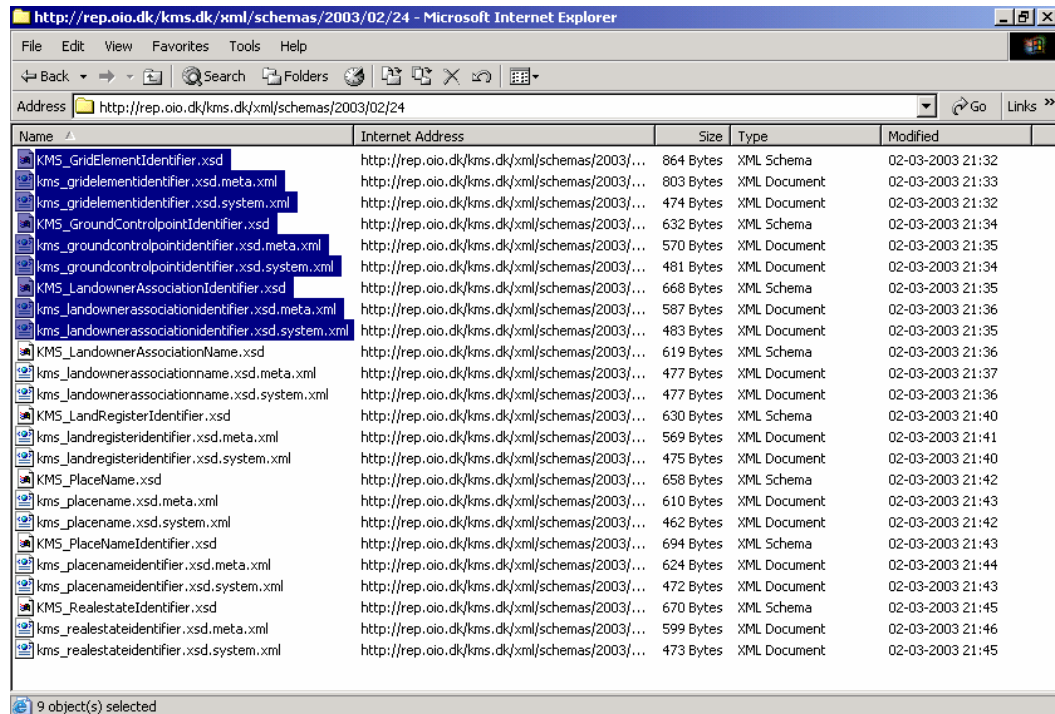


Figure 7

The files have now been copied to your local computer.

WebDAV Upload

Before you can upload you must add the **Repository** as a network place or open it as a web-folder.

Using a Windows Explorer locate the files to copy

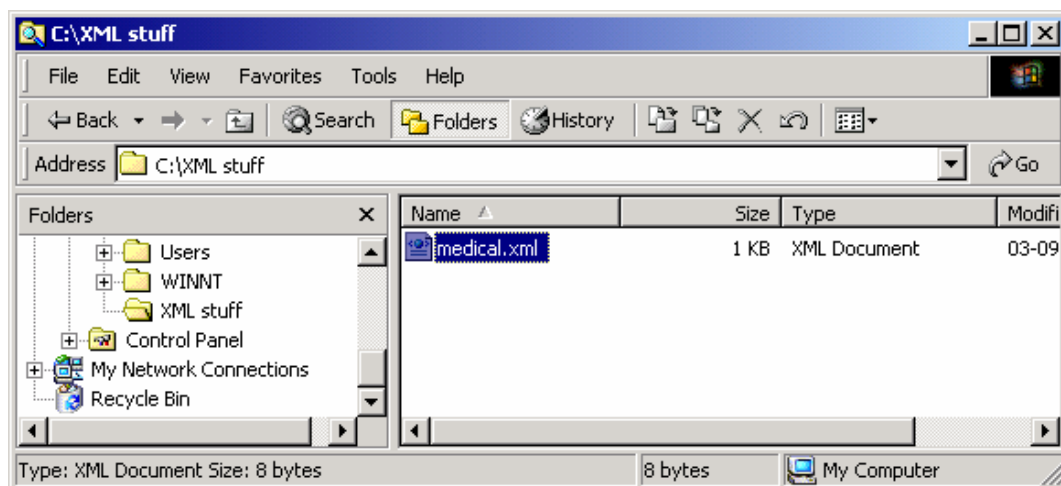


Figure 8

In the **Edit** menu select **Copy To Folder**.

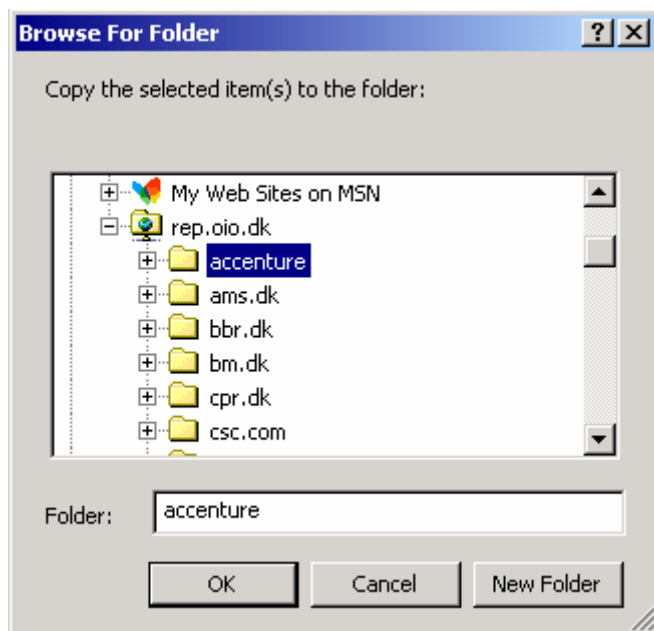


Figure 9

Under **My Network Connections** you locate your connection to the **Repository** and browse to the folder where you want to copy your files to. Select **OK**.

Your files are now copied to the **Repository** if you have write rights in the destination folder. If not an error message is displayed.

Windows 98

The procedure is almost identical to the one for Windows 2000

Add a network place

- Double click on the "My Computer" icon on your desktop.
- Double click on "Web Folders".
- Double click on "Add Web Folder".
- A window opens. At the "Type the location to Add" prompt, type the **Repository** WebDAV URL: <http://rep.oio.dk/> .
- Click on **Next**.
- It should prompt you for your user name and password.
- At the "Enter Name for the Web Folder" prompt, you may enter an alias for the **Repository** web folder.
- Click on **Finish**.
- You should now see your organizations Web folder.

Upload/download

When you have added a network place you may click and drag the files that are ready to be copied to the **Repository** project room into this folder.

The next time you are ready to publish you won't have to create a new Web Folder. You will:

- Double click on the "My Computer" icon on your desktop.
- Double click on "Web Folders".

At this point you should see your folder. Double click on it, and your ready to move your files to and from the **Repository**.

Using XML Spy version 5

Many third party programs enables a WebDAV interface. XML Spy ver.5 is an example of such a third part program.

To use WebDAV you must have an open project. If you don't have one open then open an existing or create a new one.

From the Project menu select "Add external web folder to project". The **Add web folder** page appears (see Figure 10). Enter the **Repository** WebDAV access point "http://rep.oio.dk" and your user name and password. Click the **Browse** button. Select a folder (e.g. rep.oio.dk) and click **OK**.

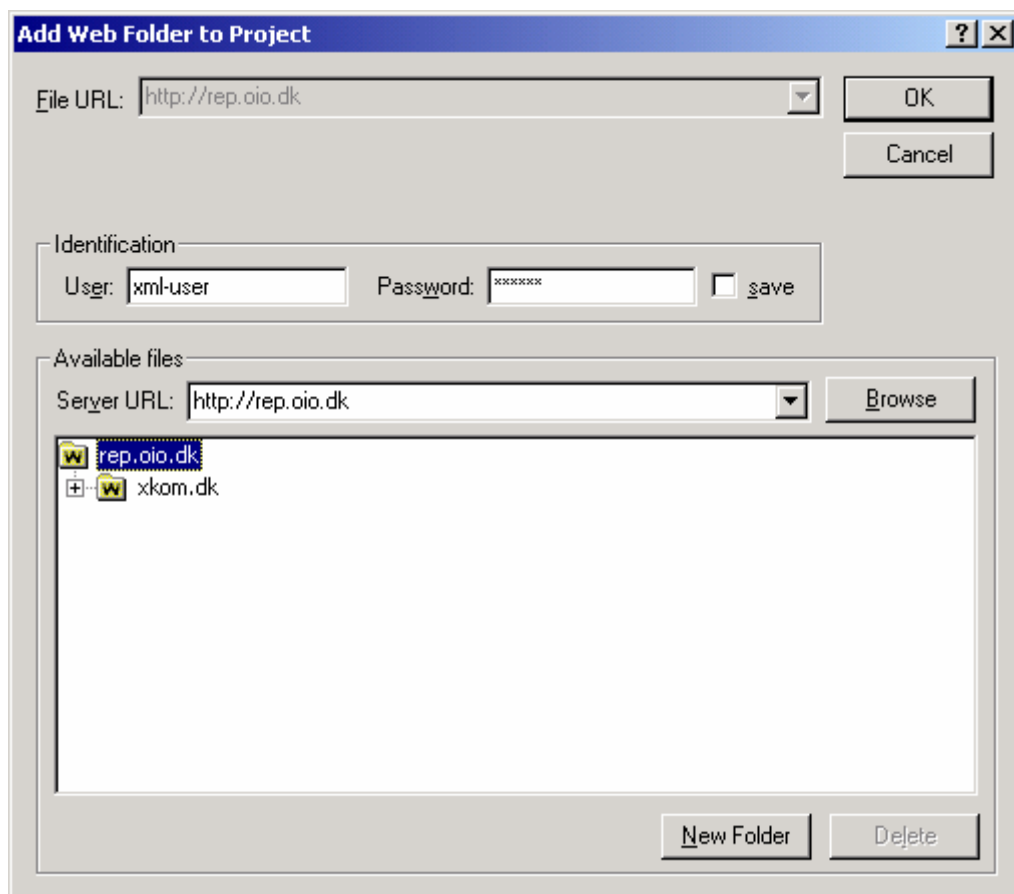


Figure 10 – Add web folder page

The web folder is added to the project overview. You may now explore the folder and subfolders in the usual way.

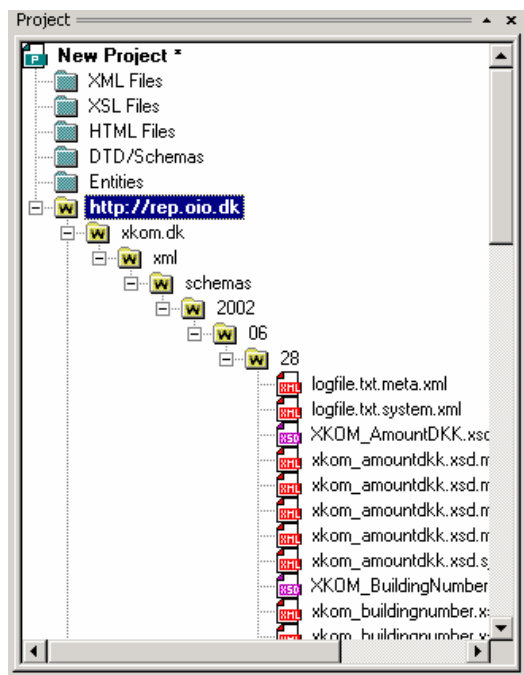


Figure 11 – Project window with a web folder added and expanded.

To copy files to and from the **Repository** drag and drop files from the local folders or use copy and paste by clicking the right mouse button on the selected files and selecting copy. On the destination folder click the right mouse button and select paste to paste the files you just copied.

Linux using KDE (2.2 or higher)

As of KDE 2.2 it is possible to access WebDAV using the Konqueror. Replace “http” with “WebDAV” in the URL. Thus use the URL “webdav://rep.oio.dk/” and enter a valid user name and password when prompted. This should give you access to the **Repository** WebDAV.

When connected to the **Repository** WebDAV uploading and downloading files is no different from usual file management.

Refer to www.webdav.org for more details and use of other clients using Linux.

Mac OS using Goliath

If you do not have a version of Goliath you can download a free version at <http://www.webdav.org/goliath> along with additional online help.

- Open Goliath by double clicking on its icon.
- A dialog box opens. Here you type the URL of the **Repository** WebDAV <http://rep.oio.dk/>
- Check the box next to "Use basic authentication"
- Enter your username, and password
- Click OK!

Once you have opened the **Repository** web site, you will notice that a new folder has opened on your desktop. It may look like just another folder, but you are actually connected to the remote server. You may now copy your files by selecting them and dragging them from your local folder to the remote folder and reverse.

Refer to www.webdav.org for more details and use of other clients using Mac OS.